



ZEBRA

ZD510



1



www.zebra.com/setup

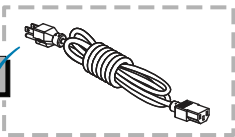
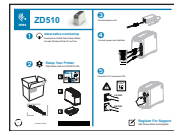
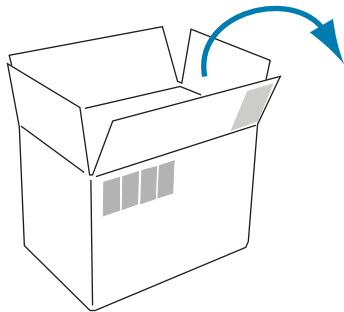
Download and Install Zebra Setup Utilities
Includes Windows Printer Driver Files

2



Setup Your Printer

<http://www.zebra.com/zd510-info>



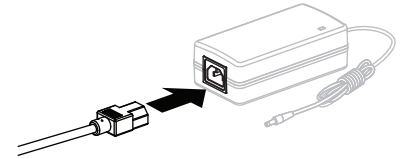
Printed In China



P1099649-001

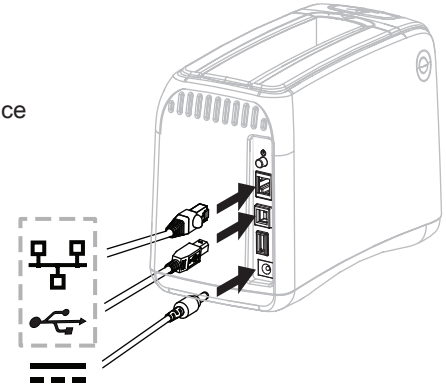
3

Connect power cord



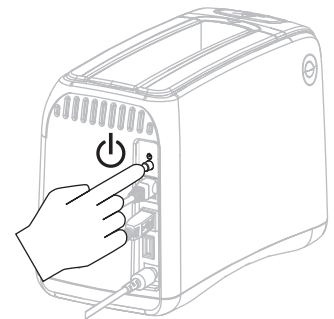
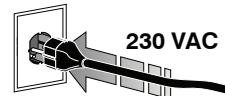
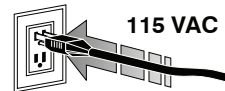
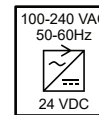
4

Connect power and interface



5

Connect to AC and power ON



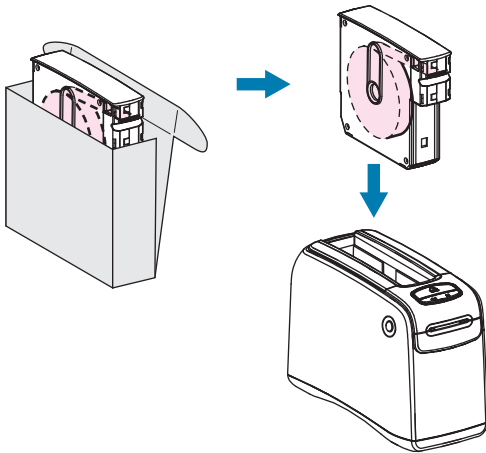
6



Register For Support

<http://www.zebra.com/register>

Load Media



Operation



= Ready

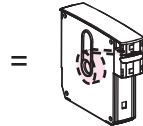


Eject

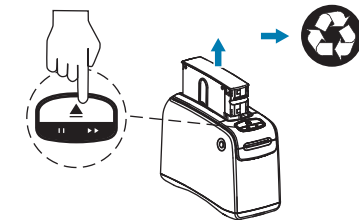
Pause/Feed



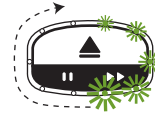
= Media Low



= Media Out



Special Conditions



= Preparing to Print



= 2 Blinks = Paused



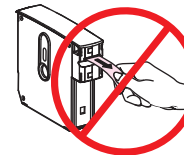
= WiFi Option Connected, Good Signal



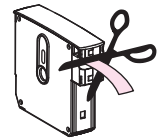
= WiFi Option Connected, Weak Signal

If Cartridge is manually ejected

Don't Pull



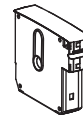
Cut



See User Guide for other conditions

<http://www.zebra.com/zd510-info>

Learn About Genuine Zebra Supplies



<http://www.zebra.com/supplies>



www.zebra.com/zd510-info



<http://www.zebra.com/locations>

NA and Corporate Headquarters
+1 800 423 0442
inquiry4@zebra.com

Asia-Pacific Headquarters
+65 6858 0722
contact.apac@zebra.com

EMEA Headquarters
zebra.com/locations
mseurope@zebra.com

Latin America Headquarters
+1 847 955 2283
la.contactme@zebra.com

©2018 ZIH Corp. and/or its affiliates. All rights reserved. Zebra and the stylized Zebra head are trademarks of ZIH Corp., registered in many jurisdictions worldwide. All other trademarks are the property of their respective owners.